

# data sheet: Scale Computing's iSN 1000



## ICS™ Intelligent Clustered Storage

3TB<sup>U</sup> Minimum Initial Configuration

Scale Computing's ICS™ architecture is the most versatile and easily scalable storage solution on the market. With an IBM GPFS supercomputing core and low per usable TB cost, storage can be purchased as you need it, when you need it. Each cluster begins with three Storage iNodes (iSN) and can scale linearly, one TB at a time. Scales to more than 2.2 PB.



| FEATURES                           | BENEFITS   |
|------------------------------------|--|
| IBM System x Servers               | Premier Solutions Platform                                     |
| Enterprise-class grid architecture | Virtually unlimited capacity                                   |
| Automated admin functions          | Easy, simple "plug-and-play" scaling                           |
| IBM GPFS Supercomputing core       | No single point of failure                                     |
| All iNodes active/active           | No single point of failure without the cost of adding hardware |
| High availability                  | Self healing and auto load balancing                           |
| Reduced admin overhead             | Single, easy to use management UI                              |
| Seamless addition of iNodes        | Zero disruption  |
| Replication and Snapshot           | Disaster protection and recovery made simple                   |
| Performance scales with growth     | Data access speeds do not diminish with growth or expansion    |
| RAID 10 and Snapshots              | Advanced data protection and backup                            |
| Unified SAN/NAS                    | No need to manage two disparate storage solutions              |
| Support                            | IBM Next Day On-Site Support Included                          |



Contact us: [info@scalecomputing.com](mailto:info@scalecomputing.com) (877) SCALE-59  
[www.scalecomputing.com](http://www.scalecomputing.com)

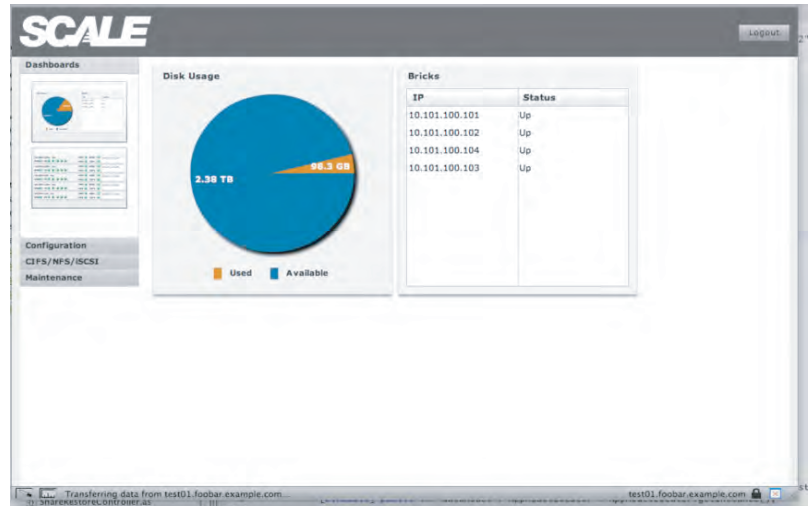


# data sheet: Scale Computing's iSN 1000



**Scale Computing's Storage iNodes** with ICS architecture are managed with a simple, easy-to-use UI that takes the hassle and cost out of managing your storage.

Simply create a storage pool of truly clustered storage by seamlessly adding iNodes (pictured on previous page). Scale's management console (right) discovers the new iNode, adds it to the cluster and begins mirroring and managing your data across the cluster. High availability is a standard feature. In fact, you can pull drives out, trip over cords and still not suffer services or data access losses. Additionally, performance is enhanced as you grow by adding one iNode at a time. There is no reason to take your cluster out of service for expansion and or upgrades.



## Appliance Specifications

| ICS HARDWARE                                       | MANAGEMENT   |
|--|--|
| 2 Enterprise-grade 1TB SATA Drives 7200 RPM        | Web (SSL) for management   |
| Protocol support: iSCSI, NFS, CIFS/SAMBA           | Serial console for initial set-up only   |
| HA Features standard with all configurations       | PERFORMANCE  |
| 350w power supply                                  | iSN 1000: (2) Enterprise-grade SATA drives @ 7200 RPM @ 70MB per/sec Transfer rate (210MB per/sec 3-iNode cluster) |
| (2) GigE ports per iNode                           |  |
| Model usable capacities/iNode: iSN-1000 1TB usable |  |
| Form Factor: 1U                                    |  |
| Proven IBM GPFS file system                        |  |

