

Simplifying cluster management at scale for MSPs.

Simplicity is engineered into everything we do.

Scale Computing Fleet Manager is the first cloud-hosted monitoring and management tool built for hyperconverged edge computing infrastructure at scale. It's now easier than ever to securely stage, manage, and monitor your clients' entire fleet of clusters running Scale Computing HyperCore. Maintenance time will be reduced by 50% or more with the simplicity designed into this industry-leading platform.

Simple

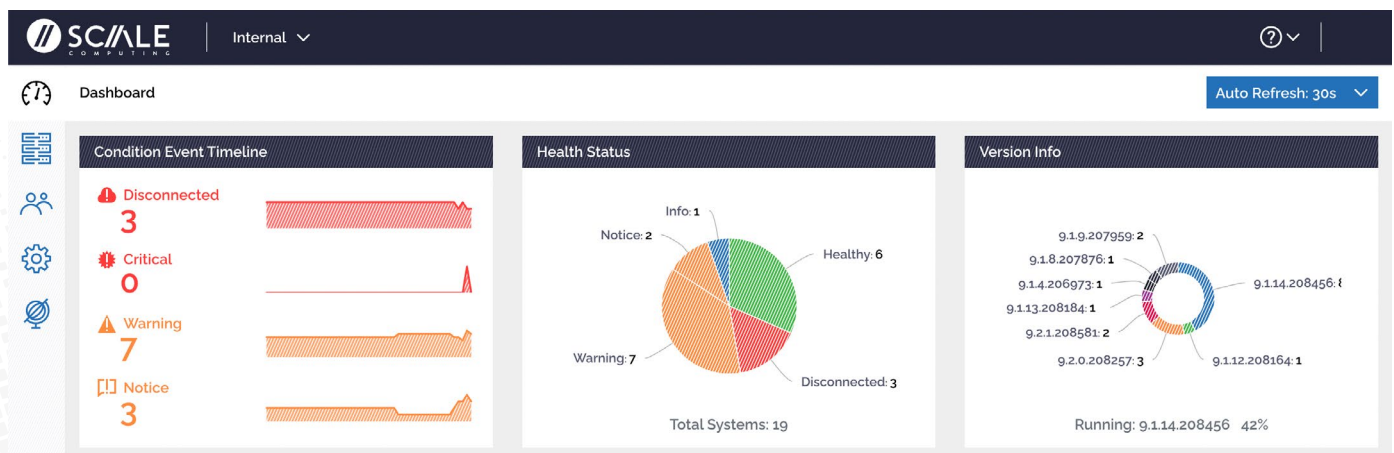
Built-in simplicity allows you to create ad hoc views of infrastructure diagnostics sorted the way you want to see them with intuitive search and sort capabilities, making it easy to find the details you're looking for within your clients' entire infrastructure.

Scalable

Consider managing infrastructure at scale solved. Whether in a data center or at the edge, from 1-50,000 clusters, see it all from a single cloud-hosted application. Remove the need to log in to individual clusters to get a complete overview of the status of your entire fleet of client SC// HyperCore clusters.

Secure

SC//Fleet Manager provides enterprise-grade security and reliability. We use state-of-the-art zero-trust-based encryption, authentication and authorization mechanisms to protect from unauthorized access, and are pursuing compliance with various industry standards and regulations, such as SOC2 and ISO 27001.



FEATURES

Zero-Touch Provisioning

Nodes and clusters shouldn't require hands-on initialization. ZTP virtually eliminates the need for staff to be present at edge installations, significantly reduces the costs and lead time for adding or replacing hardware at the edge, and allows organizations to deploy at scale.

Centrally stage thousands of clusters for installation from a single pane of glass anytime between node purchase and site install so that when nodes are powered on, they automatically provision themselves, initialize, and register with SC//Fleet Manager.

- Slash configuration time by 90% resulting in the fastest time to value from pilot to production
- Avoid the need to send expensive IT resources on-premises during installation
- Eliminate typos and inconsistencies present in manual configuration since all node and cluster initialization information is presented on a single page, and the software serial number is auto-filled



Secure Link

Secure Link provides enterprise-grade security and cloud-like simplicity for managed service providers (MSPs), allowing you to access the HyperCore UI for in-depth cluster management with the click of a button without needing expensive or complex remote access solutions or VPNs. Finally, your client deployments are just a click away on any browser, on any device, anywhere.

Unlike competitive solutions where opening UI access to the cluster requires on-cluster agents, jump boxes, or traditional VPN access, SC//Fleet Manager's Secure Link is ready for use out-of-the-box. This tight integration also eliminates the risk associated with the manual setup and maintenance of traditional remote management tools that provide wide levels of access to remote networks and devices.

- One-click web access from any modern browser on any device
- Eliminate the risk, inconvenience, and cost of traditional remote access tools like VPNs or remoting into Jump Servers
- Avoid misconfiguration risk
- Connection is encrypted and opened outbound by the cluster closing automatically upon session completion

BENEFITS

Real-time Monitoring of Resources and Health

SC//Fleet Manager consolidates real-time conditions and resource utilization for all of your clients' SC//HyperCore clusters. Instead of having to navigate to individual cluster UIs, SC//Fleet Manager gives users the ability to look at every cluster from a single pane of glass.

- Connectivity and Health can be checked with a quick glance from any browser on any device, even mobile
- Investigate a specific cluster to diagnose and fix any problems
- View CPU and Disk utilization in real-time at the cluster, node, and VM levels
- Drill down to the HyperCore login of any cluster from within SC//Fleet Manager

Role-based Access Control for Unlimited Users

Grant your end-users access to your SC//Fleet Manager organization, each with a role that ensures the security of your clients' fleet while promoting visibility.

- Choose from multiple predefined user roles, or create your own
- SC//Fleet Manager roles are granted and managed independently of existing SC//HyperCore user roles, ensuring granularity
- Leverage the convenience and security of Single Sign-On (Microsoft Azure AD and Google SSO currently supported)

Stay Secure with Single-click Firmware Upgrades

Always stay up-to-date with notifications of SC//HyperCore firmware upgrades for your entire fleet of client clusters.

- Know the current firmware of all clusters at-a-glance and the details of any available updates for any cluster
- Apply a firmware upgrade to a cluster with a single click from SC//Fleet Manager, no SC//HyperCore login is required
- Monitor the real-time status of firmware upgrades for any number of clusters across the fleet from a single pane of glass

FIND OUT MORE ABOUT SC//FLEET MANAGER - REQUEST A DEMO

Scale Computing is at the forefront of making edge computing more accessible and manageable for organizations of any size. For more information or to request a demo, contact us at 877-722-5359 or visit www.scalecomputing.com

“Scale Computing Fleet Manager is very simple and intuitive. The menu is simple and clearly labeled, making it easy to find everything without having to drill down several layers into a menu. The update process is as simple as it gets, with all the information for available updates right in the Update tab in the settings menu. Adding and editing users is done with a few keystrokes and a couple of mouse clicks. There isn't anything that I would consider difficult.”

