

Simplifying cluster management at scale for MSPs.

Simplicity is engineered into everything we do.

Scale Computing Fleet Manager is the first cloud-hosted monitoring and management tool built for hyperconverged edge computing infrastructure at scale. It's now easier than ever to securely stage, manage, and monitor your clients' entire fleet of clusters running Scale Computing HyperCore. Maintenance time will be reduced by 50% or more with the simplicity designed into this industry-leading platform.

Simple

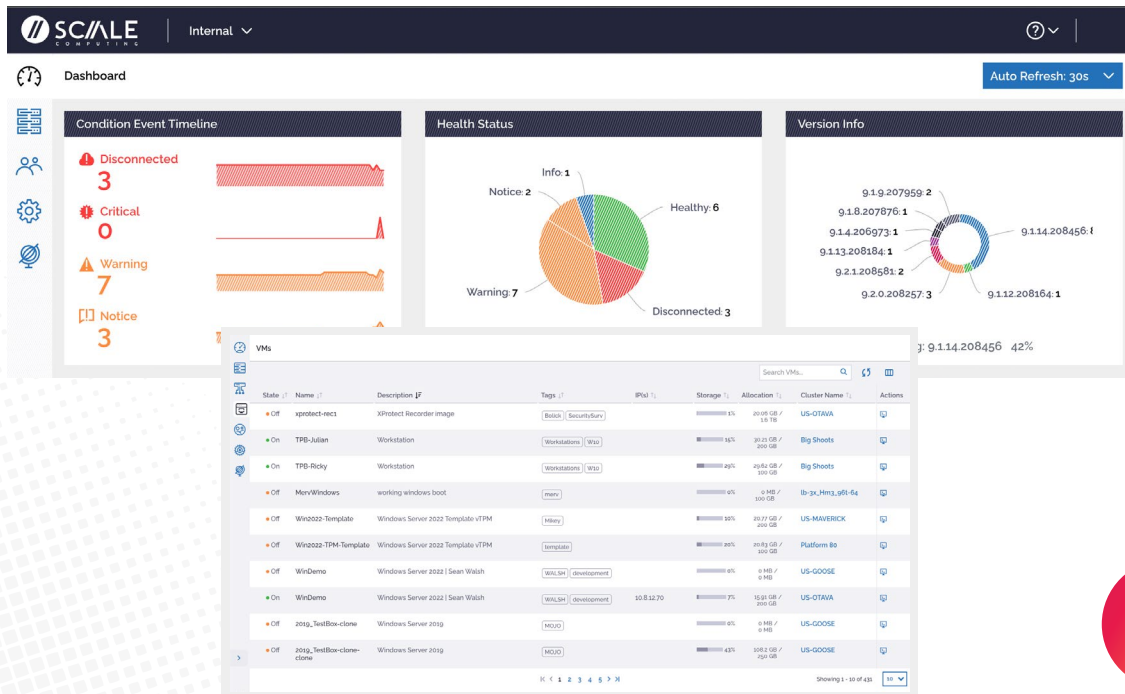
Built-in simplicity allows you to create ad hoc views of infrastructure diagnostics sorted the way you want to see them with intuitive search and sort capabilities, making it easy to find the details you're looking for within your clients' entire infrastructure.

Scalable

Consider managing infrastructure at scale solved. Whether in a data center or at the edge, from 1-50,000 clusters, see it all from a single cloud-hosted application. Remove the need to log in to individual clusters to get a complete overview of the status of your entire fleet of client SC//HyperCore clusters.

Secure

SC//Fleet Manager provides enterprise-grade security and reliability. We use zero-trust-based encryption, authentication, and authorization mechanisms to protect from unauthorized access, and are pursuing compliance with various industry standards and regulations, such as SOC2 and ISO 27001.



KEY BENEFITS

Real-time Monitoring of Resources and Health

SC//Fleet Manager consolidates real-time conditions and resource utilization for all of your SC//HyperCore clusters and gives users the ability to look at every cluster from a single pane of glass.

- Connectivity and Health can be checked with a quick glance from any browser on any device, even mobile
- View CPU and Disk utilization in real-time at the cluster, node, and VM levels

Stay Secure with Single-click

Firmware Upgrades

Always stay up-to-date with SC//HyperCore firmware upgrades for your fleet of clusters.

- Know the current firmware, and the details of any available updates for any cluster at-a-glance
- Apply a firmware upgrade to a cluster with a single click from SC//Fleet Manager, no SC//HyperCore login is required
- Workload and other confidential or sensitive data are never collected or stored in SC//Fleet Manager

FEATURES

Zero-Touch Provisioning

Nodes and clusters shouldn't require hands-on initialization. ZTP virtually eliminates the need for staff to be present at edge installations, significantly reduces the costs and lead time for adding or replacing hardware at the edge, and allows organizations to deploy at scale.

Centrally stage thousands of clusters for installation from a single pane of glass anytime between node purchase and site install so that when nodes are powered on, they automatically provision themselves, initialize, and register with SC//Fleet Manager.

- Slash configuration time by 90% resulting in the fastest time to value from pilot to production
- Avoid the need for expensive IT resources on-premises during installation

Secure Link

Secure Link provides enterprise-grade security and cloud-like simplicity for administrators, allowing them to access the HyperCore UI for in-depth cluster management with the click of a button without needing expensive or complex remote access solutions. Finally, your edge deployments are just a click away on any browser, on any device, anywhere.

Unlike competitive solutions where opening UI access to the cluster requires on-cluster agents, jump boxes, or traditional VPN access, SC//Fleet Manager's Secure Link is ready for use out-of-the-box. This tight integration also eliminates the risk associated with the manual setup and maintenance of traditional remote management tools that provide wide levels of access to remote networks and devices.

- One-click web access from any modern browser on any device
- Eliminate the risk, inconvenience, and cost of traditional remote access tools like VPNs or remoting into Jump Servers
- Connection is encrypted and opened outbound by the cluster closing automatically upon session completion

Virtual Machine (VM) List

With the industry-first fleet-wide virtual machines (VMs) list, real-time monitoring of all workloads across a global fleet of SC//HyperCore clusters is made even easier with a searchable and customizable view.

The VM list quickly gets you to the VM you need based on any identifier, with easy browsing and sorting.



CORPORATE HEADQUARTERS

525 S. Meridian Street - 3E // Indianapolis, IN 46225
P. +1 317-856-9959 // scalecomputing.com